

FACT SHEET

Affinix® Analytics



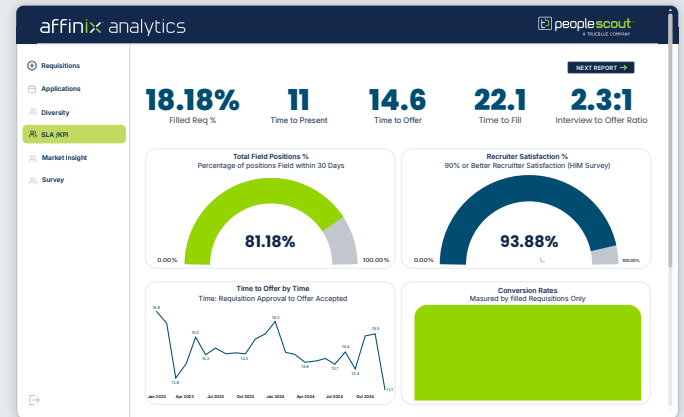
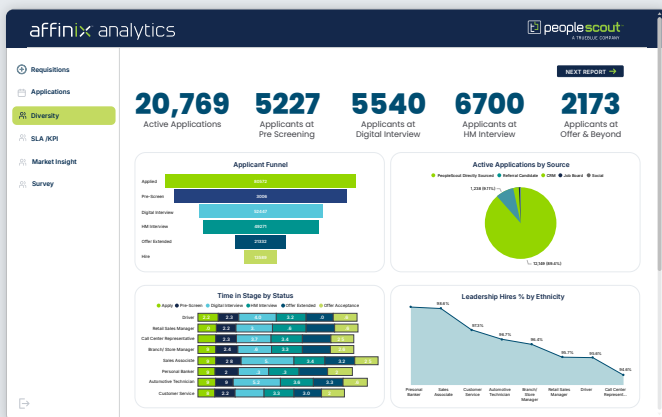
Hire Confidently with Affinix® Analytics

As part of the larger, Affinix® total talent suite, Affinix Analytics offers talent leaders a single source of truth to understand the end-to-end recruitment process and gain visibility into the total talent landscape. With a single, real-time dashboard, you can slice through the complexity, gaining instant insights into everything from hiring targets to diversity metrics, all while keeping your budget in check.

Connect business intelligence, real-time talent analytics, market intelligence and predictive modeling. Spot bottlenecks before they become roadblocks, optimize your candidate experience, and make data-driven decisions that'll make your competitors wonder how you're always ten steps ahead.

Monitor trends in:

- Career site performance
- Number of requisitions
- Pipeline health
- Average days open
- Funnel conversion
- Slate submittals
- SLA scorecard
- Time in process
- Offer accept percentage
- Diversity
- Number of hires
- Retention
- Fill rate
- Satisfaction survey results for candidates and hiring managers
- Media / campaign source



Features of Affinix Analytics

- ✓ **Interactive dashboards**
Get the complete picture with customizable dashboards. Intuitive data visualizations and interactive charts help you delve deep into trends and identify opportunities. Drill-down to individual hiring manager and recruiter metrics to drive action.
- ✓ **Pre-built reports**
Out-of-the-box reports provide quick, easy access to data. Automate report distribution to keep stakeholders across your organization in the know.
- ✓ **AI-boosted reporting**
Leverage the power of generative AI to get the most from your data. Save time and stay ahead of the curve with AI-powered reports, data summaries and more.
- ✓ **Predictive modeling**
Artificial intelligence and machine learning highlight trends, anomalies and predictions to empower your teams. Understand behaviors of top talent and predict factors such as cultural fit, willingness to change companies, and future tenure potential to improve hiring speed and accuracy over time.
- ✓ **Candidate & hiring manager surveys**
Track the candidate and hiring manager experience with built-in survey tools. Evaluate trends in satisfaction and address issues before they become a bigger problem. Protect your employer brand reputation.
- ✓ **Secure integrations**
Support true organizational transformation by pulling in market intelligence data and integrate with tools like Tableau, Power BI and Looker to combine your talent acquisition data with other HR, performance and business analytics.
- ✓ **VMS integrations**
Affinix Analytics integrates with any VMS to provide real-time insights into supplier performance, spend and contingent workforce management. Combine contingent workforce information with data from other labor channels for a total workforce view.
- ✓ **Advanced security**
Customizable security settings let you limit access to data to specific stakeholders and teams to support your compliance requirements.

About Affinix

Affinix® is PeopleScout's proprietary total talent suite of AI-powered recruitment and reporting tools. Connecting applicant tracking, candidate relationship management, recruitment marketing, digital interviewing and talent analytics technologies, Affinix blends digital efficiency with human expertise to create personalized experiences for both candidates and hiring managers. From sourcing to onboarding, from automation to analytics, we provide unmatched visibility into the recruitment process and predictive capabilities, enhancing recruitment quality and speed and lowering costs. With flexible deployment options and the ability to pick and choose specific modules, you can enhance your existing talent tech ecosystem and customize your recruitment process to meet your unique needs. Learn more at peoplescout.com/technology.